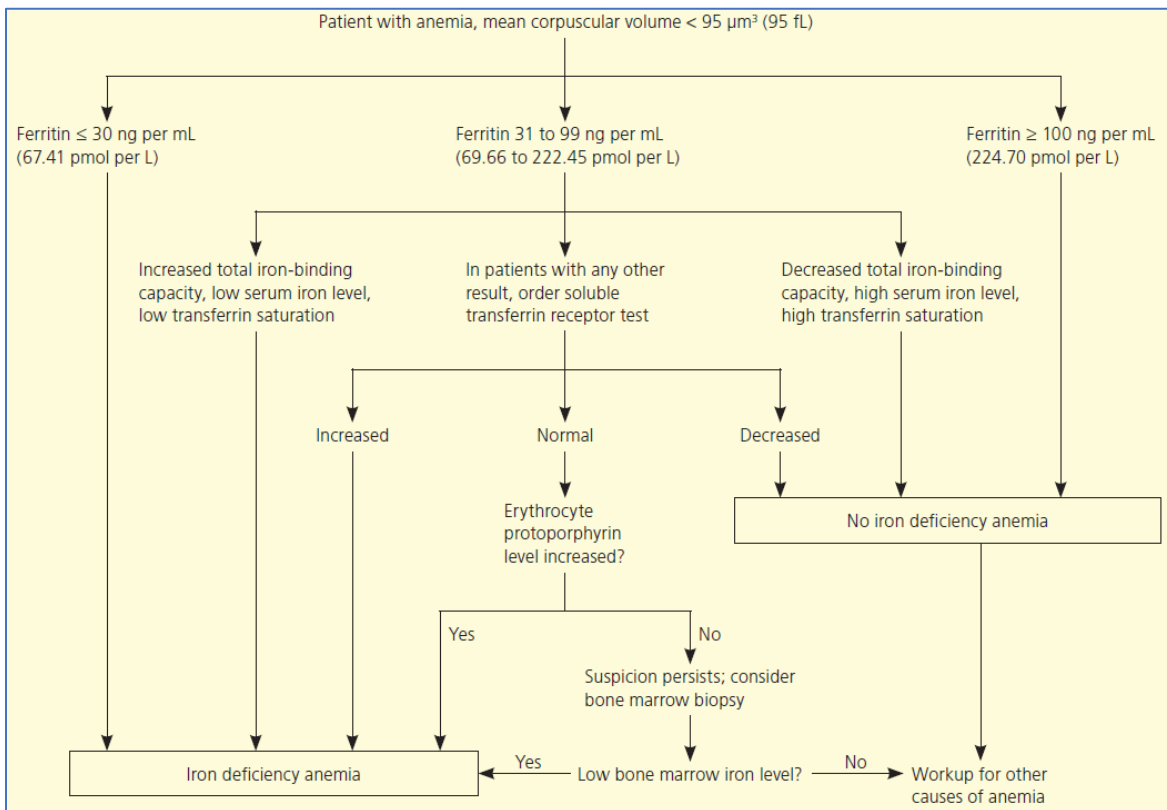


Overcoming Cancer-Related Anemia with Intravenous Iron: Hematologist/Oncologist Approaches for Optimizing Clinical Outcomes & Improving Patient Quality of Life

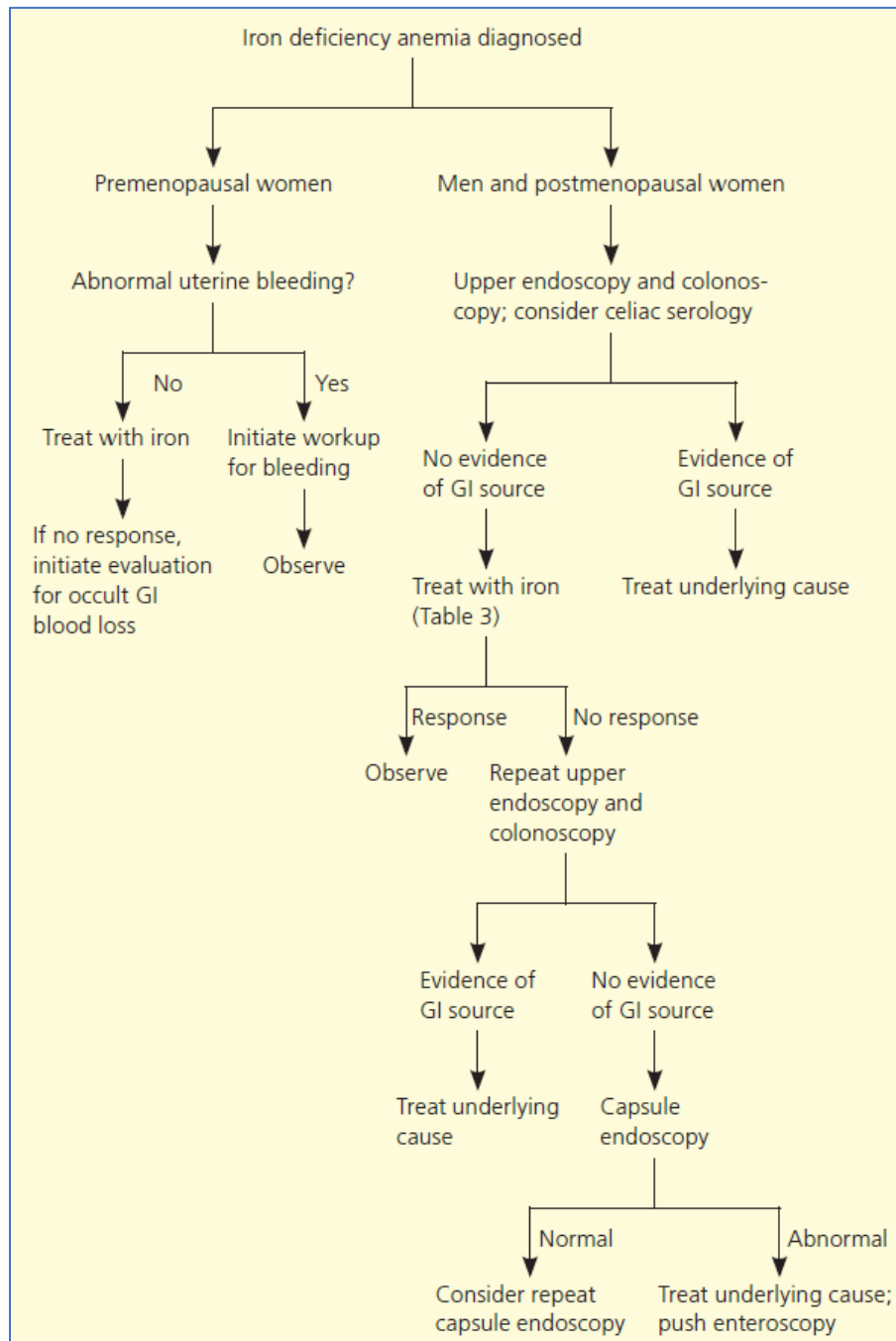
ASH 2021 Clinical Tool – An Evidence-Supported Synthesis of Management Algorithms for Cancer-Related Anemia (CRA) and/or Chemotherapy-Induced Anemia (CIA)

Figure 1. General Stepwise Clinical Management Schematic for IDA¹

Step 1: Diagnosis



Step 2: Evaluation



Step 3: Treatment

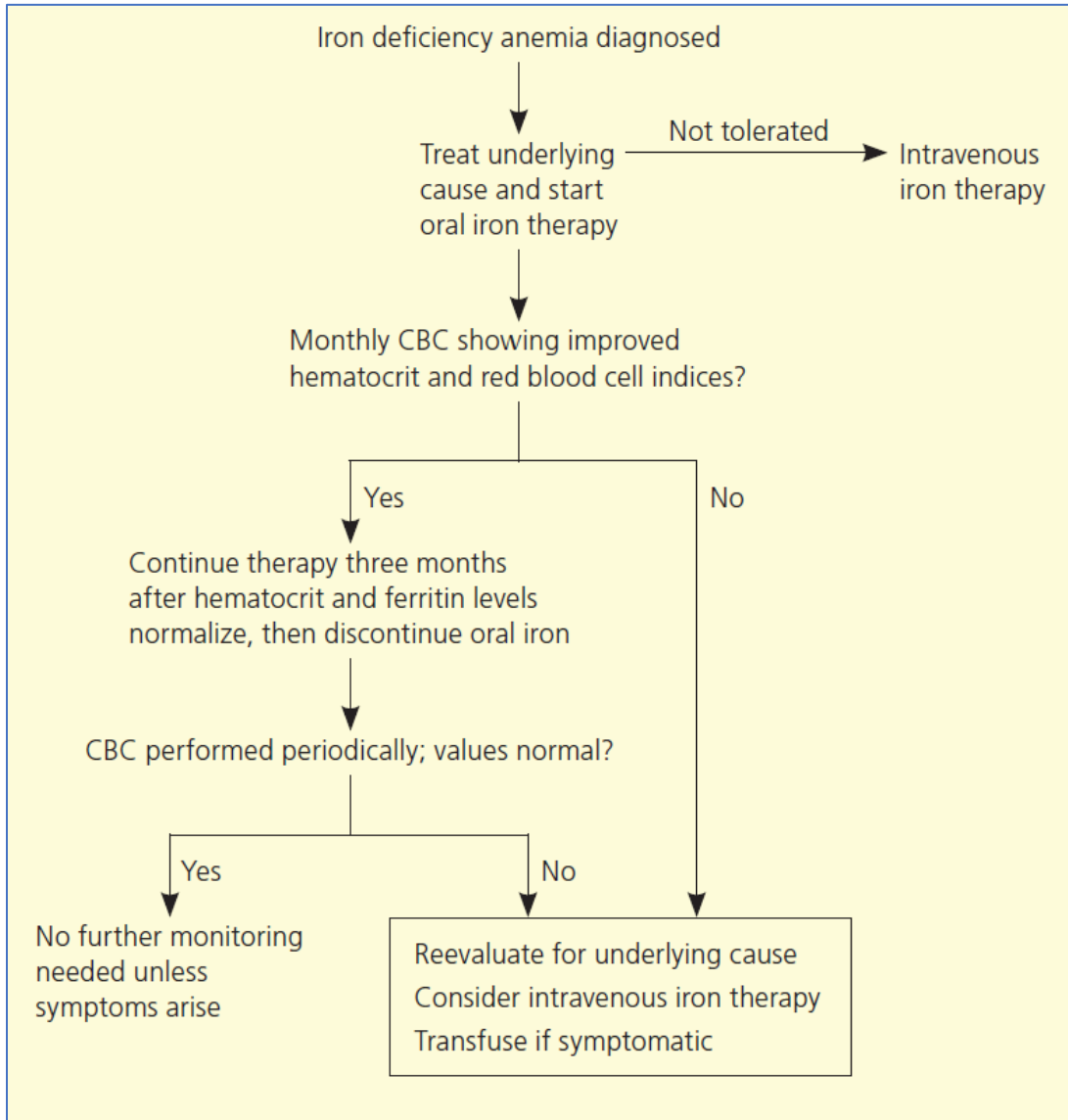
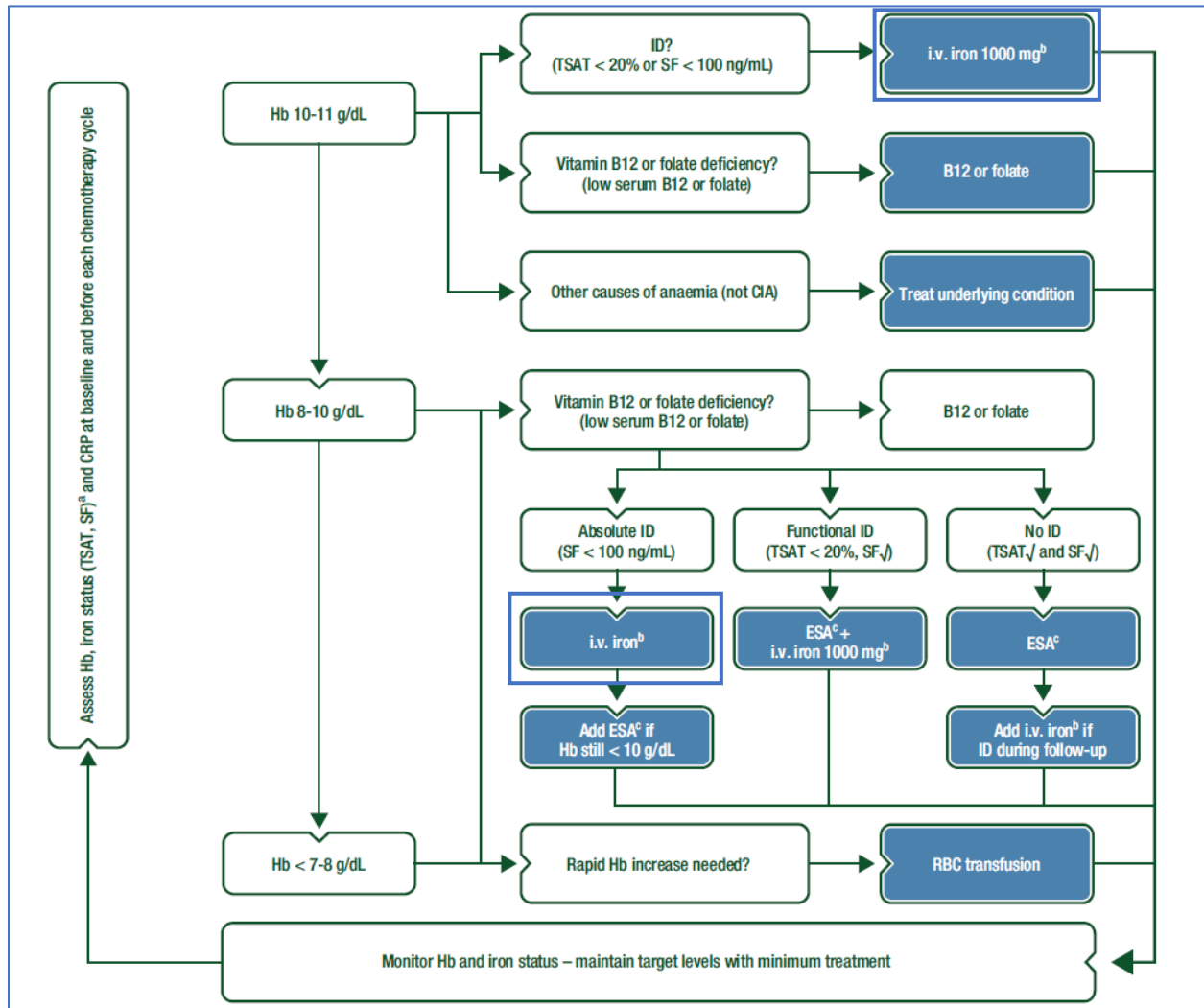


Figure 2. ESMO Management Algorithm for Chemotherapy-Induced Anemia²



References

1. Short MW, Domagalski JE. Iron deficiency anemia: evaluation and management. *Am Fam Physician*. 2013;87(2):98-104.
2. Apro M, Beguin Y, Bokemeyer C, et al. Management of anaemia and iron deficiency in patients with cancer: ESMO Clinical Practice Guidelines. *Ann Oncol*. 2018;29(Suppl 4):iv96-iv110.